

## The smallest level in the world!

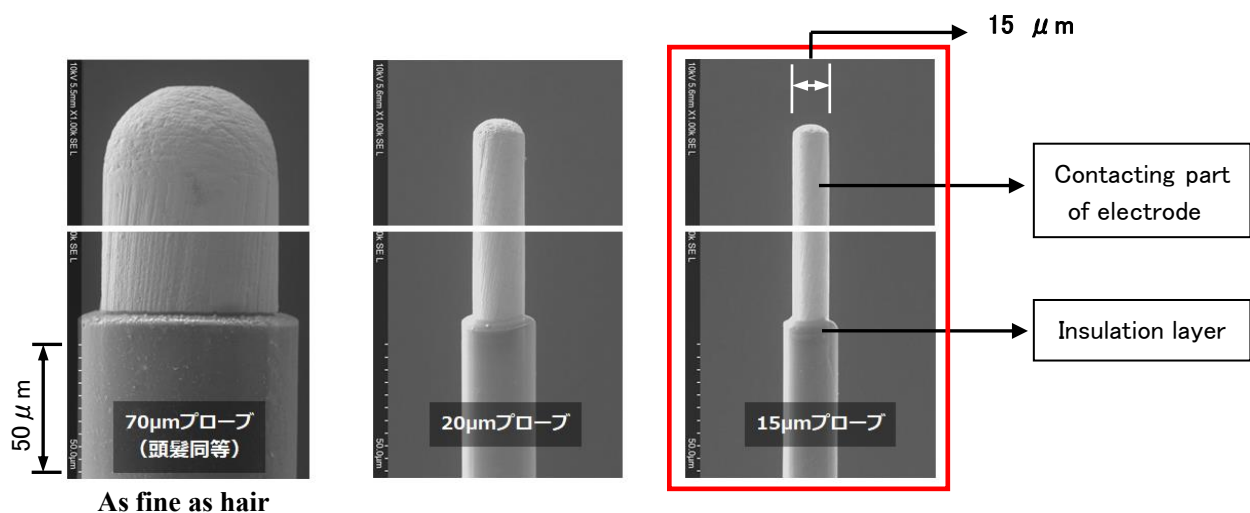
# Development of Contact Probe of 15 $\mu$ m diameter for measuring electric parts

TOTOKU ELECTRIC CO., LTD (HQ : Minato-ku, Tokyo, President : Hiroshi Kawaguchi) has developed product of 15 micrometer (0,015 millimeter) diameter which is the smallest level in the world as Contact Probe used for electric test of electric parts.

Contact Probe is contact needle for electrical test by contacting electrodes of electric parts. This product is used for test before and behind process of cutting out IC from silicon wafer and test of semiconductor package substrate. According to downsizing of electric parts, distance of electrodes is getting to be narrower pitch. For test of such miniaturized and more integrated wafer and semiconductor package substrate, finer Contact Probe is required.

There are some kinds of shape of Contact Probe according to structure of testing jig, fine and strong wire type of our company is appropriate for test of narrow pitch electrodes. It is possible to produce from straightness processing of conductor to finished product continuously and satisfy customer's request promptly by applying our unique and special electric wire production technology for production of Contact Probe. In production process of 15 micrometer diameter type, we have improved dimension accuracy by improving laser peeling method for removing insulation layer of terminals, and achieved stable quality by full automatization of testing shape and dimension. We have transferred Contact Probe production line to our new factory completed in January 2021 for better productivity and future production increase.

We will continue to concentrate on fine Contact Probe of 30 micrometer or finer which is our strong point by our unique technology, and satisfy demand of testing more integrated and downsizing electric parts.



【 Enlarged photo of Contact Probe 】

Link to our company's product page : <https://www.totoku.com/product/contactp/>

Contact us : <https://www.totoku.com/inquiry/>