

TOTOKU
CCL Series

3 Megapixel 20.8" Color LCD

CCL316

20.8"

Color
liquid crystal
panel

Digital
Input

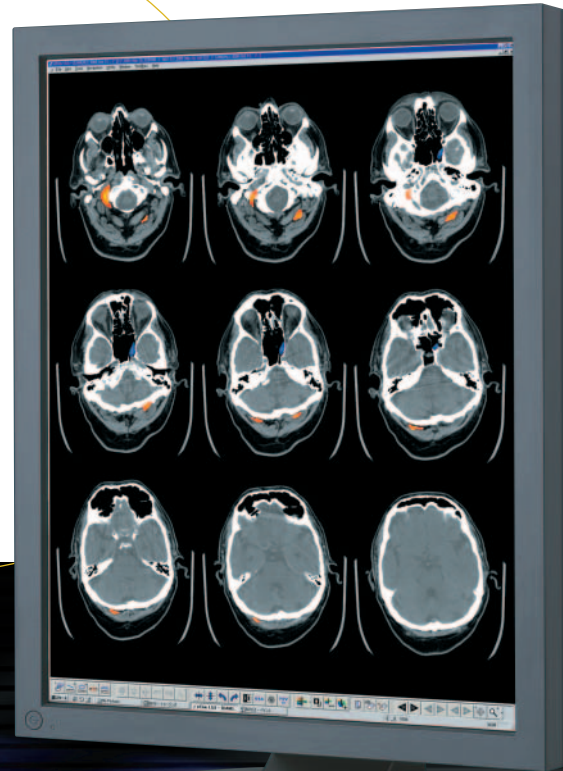
1536
×
2048

High
luminance
235cd/m²

Contrast
300:1

VESA
mounting

3 Megapixel Color Display



20.8"

Medi**i**visor® 

**3 Megapixel Super High-resolution Color LCD
with Calibration Features**

A large (20.8") super high-resolution color LCD panel provides fine images of 2548 x 1536 pixels. Clear images with high luminance and contrast (maximum luminance: 235cd/m², contrast: 300:1) are displayed.

λ-Sentinel

Stable luminance by λ-Sentinel

λ-Sentinel brings the backlight to the preset (calibrated) luminance within seconds and keeps it there with a multi-sensor, feedback control circuit, thereby maintaining calibration through backlight aging and temperature variations.

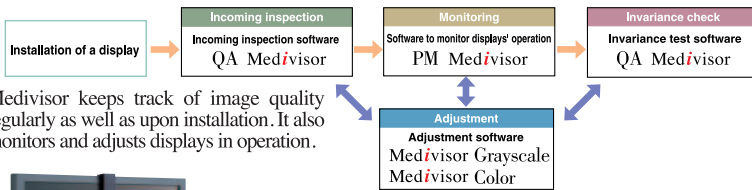
Gamma correction

Gamma curve data is stored within the display during calibration. This enables smooth grayscale display.

Hardware pivot function

CCL316 comes standard with a hardware pivot function. When used in conjunction with a TOTOKU graphics card, high speed operation is achieved in either landscape or portrait orientation.

Medivisor (optional software)



Medivisor keeps track of image quality regularly as well as upon installation. It also monitors and adjusts displays in operation.



Color Calibration Medivisor® Color

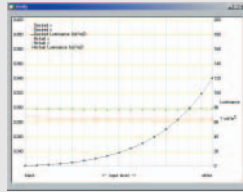
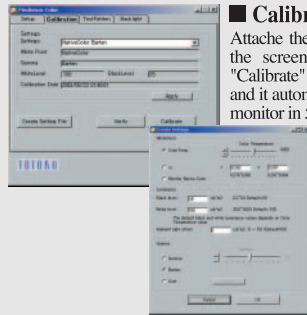
The calibration kit* (optional) controls luminance, color temperature, and gamma curve, which enables reproduction of truthful colors and adjusts variation in colors and luminance between monitors. With simple operation, Medivisor Color provides truthful colors for the critical diagnostic work environment. *Model : CAL003

Calibration Process

Attache the calibration sensor to the screen. Just click on the "Calibrate" button on the screen, and it automatically calibrates the monitor in 5 minutes.

Viewing Results

After calibration, it displays the results in graphs with numerical values. This is making the comparison easier with the user settings.



Compliance with standards

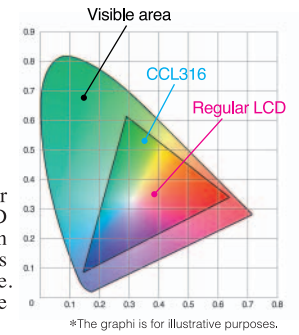
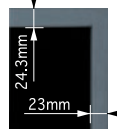
The display is certified to UL, CSA, and TÜV medical standards.



Structure

- The standard tilt stand can be removed. The display is designed for VESA* standard mounting, so it can be wall mounted or used connected to an arm or other equipment.
- Slim bezel for optimum viewing of multi-display installations.

* VESA: Abbreviation of Video Electronics Standards Association. The association determines standards concerning displays.

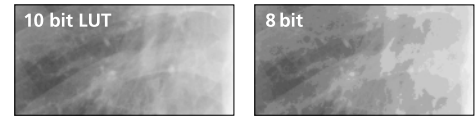


Wider range of color reproducibility

CCL316 displays a much wider range of colors than regular LCD monitors. Up to 16.77 million colors out of 106.433 million colors are simultaneously displayable. CCL316 reproduces colors more truthfully.

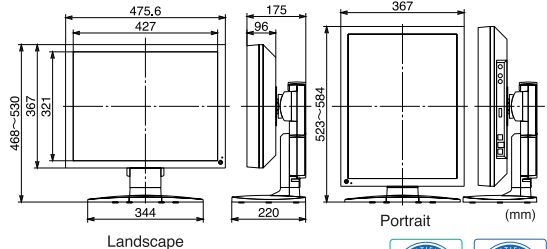
Excellent 10bit display

The built-in LUT (Look Up Table) converts 8bit (256 shades of gray) input image data from graphics card into 10bit (1021 shades of gray), which enhances the image quality and accuracy.



*The images shown are for illustrative purposes.

Model name	CCL316
LCD panel	20.8" TFT color LCD Viewing angle 170° (vertically and horizontally) Contrast 300:1
Screen display size	Horizontal: 423.9 mm, vertical: 318.0 mm (when used wide wise)
Input signal	Digital: In conformity with DVI Rev.1.0 Connector: DVI-D
Resolution	640 x 480 ~ 1024 x 768, 2048 x 1536 (OXGA)
Color display	Full color (16.77million colors)
Grayscale display	1021-step gradation to 256 gradation display
Maximum luminance	235 cd/m ² (calibrated to 120cd/m ² by factory default)
Safety standards	Medical Safety: UL60601-1, CSA C22.2 No.601.1, MDD/CE, TÜV/GM, FDA510(K) EMC: FCC-A, VCCI-A, BSMI, MIC
Dimensions (including the tilting base)	Landscape: 476 (W) x 468-530 (H) x 220 (D) mm Portrait: 367 (W) x 523-584 (H) x 220 (D) mm
Weight	Appr. 11.1 kg
Input power supply	AC100 - 240 V 50/60 Hz
Maximum power consumption	Appr. 80 W (with power management feature)
Calibration control(optional)	Luminance, gamma, Color temperature(5000K-10000K)
Tilting base	Tilting/swiveling base with a vertically/horizontally rotating feature
Other features	DCC2B, RS232C, USB hub
Accessories	AC adapter, power cord, operation manual, DVI cable, serial cable, DC-ROM (Medivisor Color)



TOTOKU has obtained ISO14001 and ISO9001 certification which are international standards concerning environment management and quality control respectively.



Safety precautions

To ensure safe use of the products, read the Operation Manual / Safety before using them.

Do not install the products in areas where they may be affected by water, dust, humidity, or oily smoke. Storing the products in such conditions could cause a fire, equipment failure or electrical shock.



TOTOKU Sales Department MM Company Totoku Electric Co., Ltd.
1-3-21 Okubo, Shinjuku-ku, Tokyo 169-8543 TEL: +81 3-5273-2022 FAX: +81 3-5273-2091
*Osaka Branch: +81 6-6352-3541 *Nagoya Branch: +81 52-771-1161 *Shinetsu Branch: +81 268-34-5285

USA TOTOKU NORTH AMERICA, INC 1425 Greenway Dr., 5th Fl. 565 Irving, TX 75038, U.S.A. TEL : +1-469-442-0112 E-mail : info@totoku-na.com	EUROPE TOTOKU ELECTRIC CO., LTD. Jakob-Krebs-Str. 124 D-47877 Willich-Anrath Germany TEL : +49-2156-4918-0 E-mail : info@totoku.de	ASIA TOTOKU ELECTRIC CO., LTD. 3-21, Okubo-1 Chome Shinjuku-ku, Tokyo, Japan TEL : +81-3-5273-2053 E-mail : mmc@totoku.co.jp
---	--	--

Current and updated information is provided on the Internet at <http://www.totoku.co.jp/dp/>

*Microsoft and Windows are trademarks of the US Microsoft Corporation and are registered in the US and other countries. *Company names and product names are the trademarks or registered trademarks of the respective companies. *Product specifications and appearance are subject to change without notice. *Colors in photographs may differ from actual colors due to the printing process. *Images on screens are simulated.

Please contact the distributor below with inquiries and orders.