

TOTOKU

20.1" Color LCD Display

CCL202

20.1 inch Full Color LCD panel 1600 x 1200 High Luminance 220 cd/m² OSD Adjustment DVI-D & D-sub

Specialized videoboard included as standard

Calibration Features That Take LCDs to New Heights



In addition to the high basic performance you expect from an LCD, this display features a host of new features, such as calibration and a luminance stabilization system, that make all the difference in printing, DTP and medicine.

- *Slim Design with Narrow Front Mask Frame
- *Large 20.1" LCD with Wide Viewing Angle
- *2 Megapixel Display Resolution (from VGA 640 x 480 to UXGA 1600 x 1200)
High-density Pixel LCD for High Image Quality
- *Gamma Correction
- *Dual Interface Digital Input (DVI) & Analog Input (D-sub)
- *VESA Standard Mounting (e.g., Wall and Arm Mounting)
(Specialized video board is needed when digital input using)

2 Megapixel High Image Quality

Both the digital interface (DVI) and the analog interface (D-sub) achieve a UXGA (1600 x 1200) display area. The 2 megapixel high resolution offers superior image quality.

Dual Interface

A digital interface (DVI) minimizes the deterioration of video signals and makes it possible to display high definition images far superior to those of conventional LCDs with analog interfaces. At the same time, a conventional analog interface (D-sub) is also supported.



Analog signal image

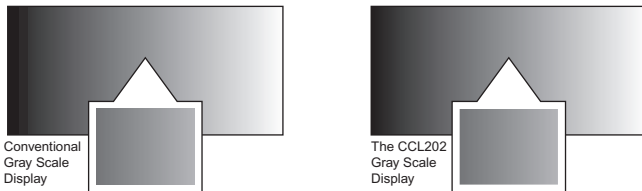


Digital signal image

*The images shown are for illustrative purposes and differ from actual screen conditions

Excellent 10-bit Gamma Gray Scale Display

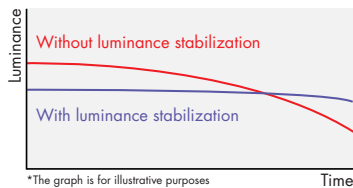
In the past, LCD displays were only able to process 8 bits (256-level gray scale) of data input from the videoboard, so it was difficult to display smooth gradation. The CCL202 expands input data from 8 bits to 10 bits, so it can display more precise gradation.



*The images shown are for illustrative purposes and differ from actual images.

High Precision Luminance Stabilization System

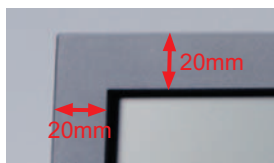
Screen luminance is affected by loss of brightness, due to using the backlight for an extended period of time, and changes in brightness due to temperature. The CCL202 employs unique technology to achieve stable luminance that varies little over time and is not affected by temperature changes.



*The graph is for illustrative purposes and differs from actual screen conditions.

Space-saving Slim Design

The CCL202 features an improved space-saving design, including a narrow (20 mm) frame, that makes it less bulky than conventional displays.

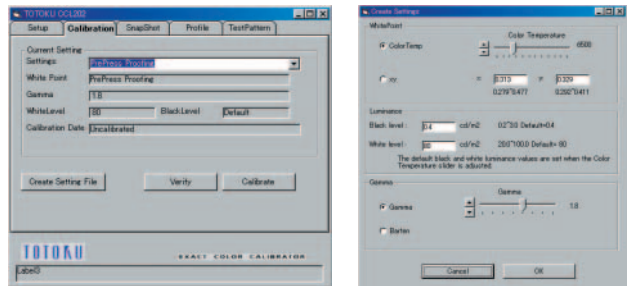


Display Utility Kit (Optional)

With software that makes a wide variety of display adjustments and a high precision sensor, you can set up a display environment tailored to your needs.

1. Color Calibration

Like CRTs, LCDs can also develop RGB imbalances depending on the usage environment. Calibration offsets such imbalances.



Calibration screen

2. ICC Profile

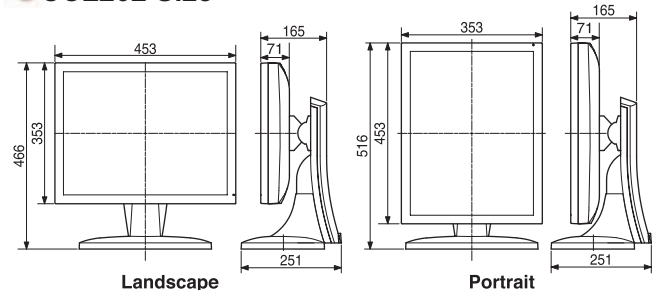
Creates the ICC profile necessary for color management.

CCL202 Main Specifications

Model Name	CCL202
LCD panel	20.1" TFT color LCD
	Viewing angle 170° (vertically and horizontally)
	Contrast 450:1
Screen display size	Horizontal: 408 mm, vertical: 306 mm (when used horizontally)
Input signal	Digital input (DVI) / analog input (D-sub)
Resolution	640 x 480 - 1600 x 1200
Color display	Full Color (16.77 million colors) R/G/B 8 bits each
Color temperature	5000 K - 15000 K
Maximum luminance	220 cd/m ² (64.2 fL), 150 cd/m ² (43.8 fL) when using calibration
Safety standards	UL/c-UL, CC-B, TUV, CE, VCCI-B, FDA510 (K)
Dimensions	453 (W) x 466 (H) x 251 (D) mm - landscape
	353 (W) x 516 (H) x 251 (D) mm - portrait
Weight	10.5 kg
Body color	Black
Input power supply	100 - 240 V 50 / 60 Hz, connector 3P inlet
Power consumption	Appr. 50 W (with power management feature)
Calibration control (optional)	Luminance, color balance, gamma
Tilting base	Tilting / swiveling base with vertical, horizontal, and rotating adjustment
Other features	On Screen Display (OSD), DDC2B, RS232C, USB hub
Accessories	AC adapter, power cord, operation manual, DVI cable, VGA cable, Specialized videoboard

*These specifications are accurate as of September 2002. They are subject to change without notice.

CCL202 Size



	Safety Precautions	To ensure safe use of this product, read "Operation Manual / Safety" before using the product.
Do not install the product in areas where it may be affected by water, dust, humidity, oil or smoke. Storing the product in such conditions could cause a fire, equipment failure or electrical shock.		

TOTOKU Sales Department MM Company
 Totoku Electric Co., Ltd.
 TEL: +81 3-5273-2053 FAX: +81 3-5273-2091
 1-3-21 Okubo, Shinjuku-ku, Tokyo 169-8543
 *USA office: +469-442-0112
 *EUROPE office: +49-173-2522589

*The most current information is provided on the Internet, at <http://www.totoku.com/dp/>
 *Company names and product names are the trademarks or registered trademarks of the respective companies. *Product specifications and appearances are subject to change without notice. *Colors in photographs differ from actual colors due to the printing process.

Please contact the distributor below with inquiries and orders.