

TOTOKU

1.3 Megapixel
18.1" Color Display

CCL182/r

CCL Series

1.3MP color LCD with color calibration function

Dual analog/digital interfaces with a color calibration function.
Its built-in luminance stabilizing system provides stability in luminance.



*Flat Display System
for Medical Imaging*

1.3

Megapixel
Color Display

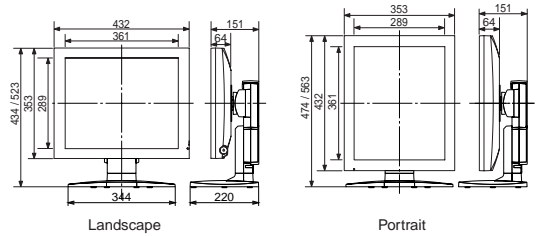
18.1"	Analog & Digital	High luminance 270cd/m ²	Contrast 400:1	Calibration function	10Bit LUT	Multi function Stand
-------	------------------	-------------------------------------	----------------	----------------------	-----------	----------------------

Features :

- ▶ **Color calibration function to reproduce colors faithful to the original and grayscale compliant with DICOM Part 14**
By calibrating color temperature, luminance, and gamma characteristics, reproduction of colors faithful to the original and smooth display of grayscale are possible. (A calibration kit is required.)
- ▶ **Built-in 10bit LUT (Look-up Table) to reproduce beautiful grayscale**
The built-in LUT selects the most appropriate 256 shades of gray (8bit) out of 1021 shades (10bit) to realize finer and smoother grayscale.
- ▶ **Luminance stabilizing system λ-Sentinel for stable display of medical images**
Automatically corrects and luminance fluctuation due to startup drift, temperature change, and aging to provide stable luminance.
- ▶ **Dual digital / analog interface**
Analog RGB and digital DVI inputs are supported.
- ▶ **Worldwide medical safety standards**
This display is certified under various medical safety standards that are much more demanding than those for general-purpose IT equipment.
- ▶ **Medivisor Series software (Optional)**
The Medivisor Series software offers collective support for display quality control and delivers high-quality and stable medical images while realizing reduction in display quality management costs.

Specifications

Model Name	CCL182 /r	
LCD Panel	Technology	18.1-inch, TFT Color Active matrix
	Display Area	359mm X 287mm
	Pixel Pitch	0.2805mm X 0.2805mm
	Contrast Ratio	400 :1 (Typ.)
	Maximum Luminance	270cd/m ² (Typ.), (calibrated to 120cd/m ² by factory default)
	Viewing Angle	170° vertical and horizontal
Visual Performance	Available Resolution	640 X 480 (VGA), ~1280 X 1024 (SXGA)
	Color display	Full color (16.77million colors)
Input Signal	Input Sync Signal	Digital DVI / Analog RGB
	Plug and Play	DDC2B compliant
Input Power Supply	Input	AC adapter 100V ~ 240V (-10%, +6%) 50/60Hz
	Maximum Power Consumption	50W Typical (with power management feature)
Features	Calibration Control	Luminance, Gamma, Color temp. (A calibration kit is required.)
	USB Hub	USB Rev. 1.1 compliant, Bus-powered USB upstream connector (x1), USB downstream connector (x2)
Approvals	UL2601-1, CSA C22.2 No.601.1, MDD/CE, FDA510 (k), MIC, BSMI, FCC-B, VCCI-B	
Physical Characteristics	Dimensions (incl. tilt stand)	Landscape : 432 (W) X 434 / 523 (H) X 220.0 (D) mm Portrait : 353 (W) X 474 / 563 (H) X 220.0 (D) mm
	Weight	Net: approx. 10kg, Without tiltstand: approx. 5.8kg
	Tilt stand	Tilt, Swivel, Portrait / Landscape
	Mount	100mm VESA mounting
	Security Slot	Antitheft security slot (tilt stand)
Accessories	AC adapter, Power cord(3P), DVI cable, VGA cable, Serial cable, USB cable, Operation manual	



TOTOKU has obtained ISO14001 and ISO9001/ISO13485 certification which are international standards concerning environment management and quality control respectively.



Safety Precautions	Please read the user's manual for safe and proper use.
Do not expose the product to dust, moisture, steam, or oily smoke. It could cause fire, electric shock, or a failure.	

TOTOKU

TOTOKU Intelligent Devices and Solutions Dept. Sales and Marketing Division.
TOTOKU ELECTRIC CO., LTD.
1-3-21 Okubo, Shinjuku-ku, Tokyo 169-8543 TEL: +81 3-5273-2022 FAX: +81 3-5273-2091
*Osaka Branch: +81 6-6352-3541 *Nagoya Branch: +81 52-771-1161 *Shinetsu Branch: +81 268-34-5285

USA TOTOKU NORTH AMERICA, INC 1425 Greenway Dr., Ste. 565 Irving, Tx 75038, U.S.A. TEL : +1-972-550-1888 E-mail : info@totoku-na.com	EUROPE TOTOKU ELECTRIC CO., LTD. Jakob-Krebs-Str. 124 D-47877 Willich-Anrath Germany TEL : +49-2156-4918-0 E-mail : info@totoku.de	ASIA TOTOKU ELECTRIC CO., LTD. 3-21, Okubo-1 Chome Shinjuku-ku, Tokyo, Japan TEL : +81-3-5273-2053 E-mail : info-ids@totoku.co.jp
---	---	--

Additional product information is available at <http://www.totoku.com/display/>

*Microsoft and Windows are trademarks of the US Microsoft Corporation and are registered in the US and other countries. *Company names and product names are the trademarks or registered trademarks of the respective companies. *Product specifications and appearance are subject to change without notice. *Colors in photographs may differ from actual colors due to the printing process. *Images on screens are simulated.

Please contact the distributor below with inquiries and orders.