

# TOTOKU

18.1" Color LCD Display

# CCL182

18.1  
inch

Full Color  
LCD  
panel

1280  
x  
1024

High Luminance  
220  
cd/m<sup>2</sup>

OSD  
Adjustment

DVI-D  
&  
D-Sub

Specialized videoboard included as standard

***Wide Viewing Angle, High Contrast and  
10-bit Gamma for Subtle Color Expression.***



**In addition to the excellent performance that is standard with LCDs, this display offers 10-bit gamma, a luminance stabilization system and other new features that make it perfectly suited for many uses in addition to office use.**

- \*Wide Viewing Angle of 170° Vertically and Horizontally
- \*1.3 Megapixel Display Resolution (from VGA 640 x 480 to SXGA 1280 x 1024)
- \*Gamma Correction
- \*Dual Interface Digital Input (DVI) & Analog Input (D-sub)
- \*VESA Standard Mounting (e.g., Wall and Arm Mounting)

### 1.3 Megapixel High Image Quality

Both the digital interface (DVI) and the analog interface (D-sub) achieve a SXGA (1280 x 1024) display area. The 1.3 megapixel high resolution offers superior image quality.

### Dual Interface

A digital interface (DVI) minimizes the deterioration of video signals and makes it possible to display high definition images far superior to those of conventional LCDs with analog interfaces. At the same time, a conventional analog interface (D-sub) is also supported.



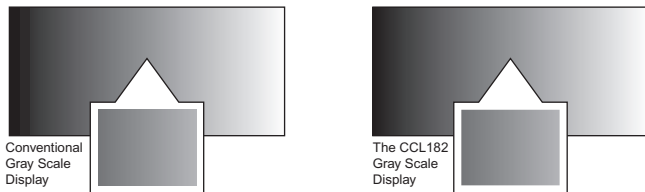
Analog signal image

Digital signal image

\*The images shown are for illustrative purposes and differ from actual screen conditions

### Excellent 10-bit Gamma Gray Scale Display

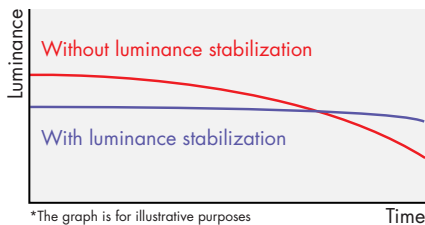
In the past, LCD displays were only able to process 8 bits (256-level gray scale) of data input from the videoboard, so it was difficult to display smooth gradation. The CCL182 expands input data from 8 bits to 10 bits, so it can display more precise gradation.



\*The images shown are for illustrative purposes and differ from actual images.

### High Precision Luminance Stabilization System

Screen luminance is affected by loss of brightness, due to using the backlight for an extended period of time, and changes in brightness due to temperature. The CCL182 employs unique technology to achieve stable luminance that varies little over time and is not affected by temperature changes.



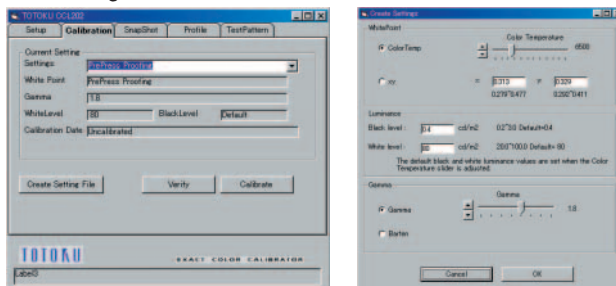
\*The graph is for illustrative purposes and differs from actual screen conditions.

### Display Utility Kit (Optional)

With software that makes a wide variety of display adjustments and a high precision sensor, you can set up a display environment tailored to your needs.

#### 1. Color Calibration

Like CRTs, LCDs can also develop RGB imbalances depending on the usage environment. Calibration offsets such imbalances.



Calibration screens

#### 2. ICC Profile

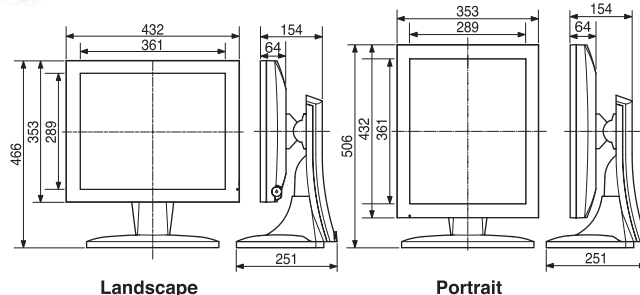
Creates the ICC profile necessary for color management.

### CCL182 Main Specifications

Model Name	CCL182
LCD panel	18.1" TFT color LCD
	Viewing angle 170° (vertically and horizontally)
	Contrast 400:1
Screen display size	Horizontal: 359 mm, vertical: 287 mm (when used horizontally)
Input signal	Digital input (DVI) / analog input (D-sub)
Resolution	640 x 480 - 1280 x 1024
Color display	Full color (16.77 million colors) R/G/B 8 bits each
Color temperature	5000 K - 15000 K
Maximum luminance	235 cd/m <sup>2</sup> (68.6 fL), 150 cd/m <sup>2</sup> (43.8 fL) when using calibration
Safety standards	UL/c-UL, CC-B, TUV, CE, VCCI-B, FDA510 (K)
Dimensions	432 (W) x 466 (H) x 251 (D) mm - landscape 353 (W) x 506 (H) x 251 (D) mm - portrait
Weight	9.4 kg
Body color	Black
Input power supply	100 - 240 V 50 / 60 Hz, connector 3P inlet
Power consumption	Appr. 50W (with power management feature)
Calibration control (optional)	Luminance, color balance, gamma
Tilting base	Tilting / swiveling base with vertical, horizontal, and rotating adjustment
Other features	On Screen Display (OSD), DDC2B, RS232C, USB hub
Accessories	AC adapter, power cord, operation manual, DVI cable, VGA cable, Specialized videoboard

\*These specifications are accurate as of September 2002. They are subject to change without notice.

### CCL182 Size



### Safety Precautions

To ensure safe use of this product, read "Operation Manual / Safety" before using the product.

Do not install the product in areas where it may be affected by water, dust, humidity, oil or smoke. Storing the product in such conditions could cause a fire, equipment failure or electrical shock.



Sales Department MM Company  
Totoku Electric Co., Ltd.

TEL: +81 3-5273-2053 FAX: +81 3-5273-2091  
1-3-21 Okubo, Shinjuku-ku, Tokyo 169-8543  
\*USA office: +469-442-0112  
\*EUROPE office: +49-173-252589

\*The most current information is provided on the Internet, at <http://www.totoku.com/dp/>.

\*Company names and product names are the trademarks or registered trademarks of the respective companies. \*Product specifications and appearances are subject to change without notice. \*Colors in photographs differ from actual colors due to the printing process.

Please contact the distributor below with inquiries and orders.